



Goodhue County
Finance & Taxpayer Services
509 W 5th Street
Red Wing, MN 55066

Election Clerk Training Session

June 18, 2018

Agenda

- Election Clerk Training Requirements
- 2016 & 2017 Recap
- New in 2018
- Pre-Election Administration*
- Election Day*
- Post-Election Duties
- Other
- Break-out
 - Equipment
 - Absentee Voting

Election Clerk Training Requirements

- “Election Cycle” – begins on January 1 of even-numbered years and ends on December 31 of an odd-numbered year
 - January 1, 2018 – December 31, 2019
- All election clerks must be trained and certified before they can administer elections
- County has a database to track hours for all election clerks and judges
 - Issue Election Administrator Certificates to all municipal clerks and all school clerks for which Goodhue County is home county.

School District Clerk Training Requirements



- Initial certification
 - 5 hours of training, good for election cycle in which earned
- Certification Maintenance
 - Complete 4 hours of election training during each election cycle
 - Training may be provided by county auditor or Secretary of State
- Emergency Training
 - A municipal clerk who has taken office less than 6 months before an election may administer that election after completing 2 hours of emergency training given by the *home* county auditor or Secretary of State
- Time spent attending election judge training will count towards your initial certification or bi-annual maintenance

Election Training from Other Sources (“not us”)



- 4 of the 5 hours of initial certification and 3 of the 4 hours of certification maintenance may be from other sources, subject to approval of the home county auditor
 - When submitting training hours from other (outside) sources, please include a copy of the agenda and/or course curriculum

County Website – Training Materials



The screenshot shows the Goodhue County Minnesota website. At the top left is the county seal. The main header reads "GOODHUE COUNTY MINNESOTA" in large blue and green letters, with the tagline "TO EFFECTIVELY PROMOTE THE SAFETY, HEALTH, AND WELL-BEING OF OUR RESIDENTS" below it. A navigation menu on the left includes "SEARCH...", "Campaign Finance Reports", "Election Training Materials" (highlighted with a red arrow), "FACILITIES & HOURS", "PROPERTY & TAXES", "MAPS", and "PUBLIC NOTICES". The main content area shows the breadcrumb "You Are Here: Home > Government > Departments > Elections > Election Training Materials" and the heading "Election Training Materials". Below this is the text "Below are the most current election training materials available." followed by "OSS Training Materials" and a list of links: "Election Judge Training Video (2016)", "Election Judge Training", "Absentee Voting Guide", "Election Judge Recruitment", and "Municipal & School District Clerks". Further down is "Goodhue County Training Materials" with a list of links: "2016 Election Clerk Training", "2016 Election Judge Training", "2016 Election Judge Workbook Exercises", "2016 Head Judge Training", "2016 Head Judge Workbook Exercises", and "2016 Election Refresher Course". On the right side, there is a "CONTACT US" section with "Elections" contact information: "Goodhue County", "Government Center - Room 208", "509 W 5th St", "Red Wing, MN 55066", "Phone: 651-385-3040", "Fax: 651-267-4878", and "E-mail: gc_election@co.goodhue.mn.us".

GOODHUE COUNTY MINNESOTA
TO EFFECTIVELY PROMOTE THE SAFETY, HEALTH, AND WELL-BEING OF OUR RESIDENTS

SEARCH... 

[Campaign Finance Reports](#)

Election Training Materials

FACILITIES & HOURS

PROPERTY & TAXES

MAPS

PUBLIC NOTICES

You Are Here: [Home](#) > [Government](#) > [Departments](#) > [Elections](#) > Election Training Materials

Election Training Materials

Below are the most current election training materials available.

OSS Training Materials

- [Election Judge Training Video \(2016\)](#)
- [Election Judge Training](#)
- [Absentee Voting Guide](#)
- [Election Judge Recruitment](#)
- [Municipal & School District Clerks](#)

Goodhue County Training Materials

- [2016 Election Clerk Training](#)
- [2016 Election Judge Training](#)
- [2016 Election Judge Workbook Exercises](#)
- [2016 Head Judge Training](#)
- [2016 Head Judge Workbook Exercises](#)
- [2016 Election Refresher Course](#)

CONTACT US

Elections

Goodhue County
Government Center - Room 208
509 W 5th St
Red Wing, MN 55066

Phone: 651-385-3040
Fax: 651-267-4878

E-mail:
gc_election@co.goodhue.mn.us

Prior Year Reminders

- Colored Voter Receipts (for General Election only)
 - Different colors for different school districts within precinct
 - Should help ensure voter gets appropriate ballot
 - Only # written on receipt s/b the SD #
- Mail Balloting
- Election Judge Prohibition includes step-parents
- Individuals domiciled with a candidate cannot be Election Judge where candidate is on the ballot

Prior Year Reminders

- Precincts < 500 registered voters can use only 3 judges even for the state general election
- Municipal clerk's office must be open for filing from **1-5pm** on the last day of filing (M.S. 205.13, subd. 1a)
 - This does include township elections
- Online Voter Registration
- Online Absentee Ballot Requests
- "No excuse" absentee voting
- Absentee voter can return their own ballot in person on Election Day until 3pm
 - *Only returned to absentee polling location; NOT to the Election Day polling site*

Reminders from 2016

- Adds veteran ID card to photo ID's with document
- Voucher form identifies voter ID # (found on roster) and Election Judge signature in section to be completed by Election Judge
 - Adds a line for “printing” voucher's name
- Ballots in upper/lower case, font sizes

2016 New Laws

- Alternative AB method is allowed during the 7 days before the election Term is now “Direct Voting”
 - Goodhue County will implement this at the County AB site only
 - Starts Tuesday prior to official election “day”
 - Voter has option to vote AB with envelope or AB without envelope
- UOCAVA absentee application is good from when it is received through the end of that calendar year or through the next regularly scheduled state general election (whichever is later)
- 2020 Presidential Election (See slide 83)

2016 New Laws

Elections Emergency Plans

- Goodhue County Election Emergency Plan will be included in your tote box along with other supplies
 - Must be updated by July of each even numbered year
 - Updated and sent to State June 1, 2018
- See Slide 84 at end of packet for legal details

2017 New Law Highlights

- Five Uniform Election dates available for elections:
 - 2nd Tuesday in
 - February
 - April
 - May
 - August
 - 1st Tuesday after 1st Monday in November
- Special elections for townships must be held with regular township election
- Candidates address on affidavit of candidacy is private if otherwise private under MN law
- Election Judge must conceal roster Challenges from view of any other voter other than the voter who is challenged
 - *Suggesting Post-its to cover them*

2017 New Law Highlights

- By December 31 each year, each municipality and county must designate polling places for following year by ordinance or resolution
- By December 31 each year School Districts must designate combined polling places for the following year
 - Must be at a location designated for use by county or municipality
- Equipment Grant funding made available
 - Goodhue County received \$74,321.

2018 New Rule Highlights

- Specified size of AB return enveloped removed
- Health care facility AB voter may request assistance of 2 EJ's not of same party, or another person eligible to provide assistance. No person can assist a HC voter without express consent of the voter
- Additional language on vouching oath for EDR's at polling place
 - "Use this form only if you are registering to vote with a voucher as your proof of residence"

2018 New Legislation Highlights

- NONE

New in 2016 (for Goodhue County)

- “See ID” notation on roster
 - VRA for a new voter was processed through mail
 - Voter is required to show ID at next federal election
 - *Does not have to be Photo ID*
 - We will cover more in depth at election judge training
- Voter Registration Applications (new in 2016)
 - 8 ½ x 11 full size paper (pads of 100)
 - No longer need to post Tennessean warning at registration table
 - Green Vouching Forms were **REPLACED** – the new application has a vouching form on the back

New in 2018 (for Goodhue County)

- DS200
- 3 DS200 Summary Statements
 - *Because no AB votes tallied on here recommend you do not post anything at the polling place*
- On-line Election Judge training (for those that have previously been a judge)
- State implementation of multi-factor authentication for SVRS. This pertains to those cities who issue AB ballots
 - They addressed it in spring
 - Email arrived last week with details.
 - Expect you to hear soon from Secretary of State's Office.

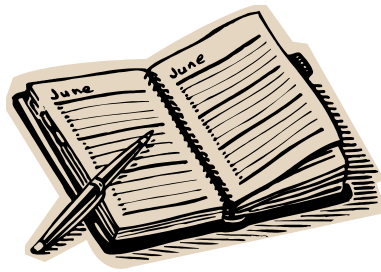
New Equipment

- Spreadsheet included in your blue folder
- Shows all the pieces that make up your final cost/machine
- For those that share a machine the cost is allocated
- Do you want a separate invoice for this?
 - Can pay off this sheet
 - Can send invoice now
 - Can send with all other costs to pay in 2019
- Extra machines

Pre-Election Administration

- Calendar
- Required Notices
- Filings
- Campaign Finance
- Election Judge Recruitment
- Equipment Testing*

Calendars



- 2018 Calendars were e-mailed out Thursday, February 22, 2018
 - Cities With Primary Calendar: Red Wing, Lake City
 - Cities Without Primary Calendar: all other cities
 - School Districts With Primary Calendar: Faribault SD
 - School Districts Without Primary Calendar: all other schools with even-year elections
 - Townships with November Elections Calendar: Holden, Kenyon, and newly added Cherry Grove
- Townships with March Elections received their calendar back in December 2017 *reference new Feb*
- Your calendar is one of the most important documents you will use during elections – look ahead to see what is coming up next for deadlines...

Election Calendar: Key Dates

- Early Filing Period: May 22nd – June 5th
 - Goodhue County, RW, Lake City, Faribault SD
- AB Period: June 29 – August 13
- Pre-Registration Close: July 24
- w/o Primary Filing Period: July 31 – August 14
- State Primary: August 14
- Canvassing Board: August 16 – August 17
- AB Period (State General): September 21 – November 5
- Pre-Registration Close: October 23
- State General Election: November 6
- Canvassing Board: November 9 – November 16

Required Notices

- Candidate filing period
 - 2 weeks published notice
 - 10 days posted notice
- Notice of Election to County Auditor
 - 74 days before every municipal or school district election
 - Notice of Cancellation (if applicable) also due 74 days before election
 - Schools: similar notice also must be filed with Commissioner of Education
- Public Notice of Election
 - 14 and 7 days published notice
 - 10 days posted notice (optional for municipalities)
 - Towns, Cities of 4th class are exempt from publication requirement but then must post

Required Notices – continued

- Public Accuracy Test
 - At least 2 days published notice
- Sample Ballot (Municipalities)
 - Publish at least 14 days before the election
 - Post at least 14 days before the election
 - Towns, Cities of 4th class exempt from publication requirement but then must post.
- Sample Ballot (School Districts)
 - Post at least 4 days before the election
- Schools (additional notice for levy referendums)
 - Must prepare and deliver to each property taxpayer a notice of levy referendum and proposed revenue increase at least 15 days before (but no more than 30 days before)

Candidate Filings

- Already closed for jurisdictions with Primary (May 22 – June 5)
- “Late Filing Period”: July 31 - August 14th
 - Cities without primary, Schools without primary, Townships with November elections
 - Must be open until 5pm on August 14th
 - Withdrawal deadline: August 16 @ 5pm
- Each jurisdiction is responsible for their own Notice of Filing (for your local offices)
 - Published Notice – 2 weeks prior to filing period (July 17)
 - Posted Notice – 10 days prior to filing period (July 20)
- Filing Fees:
 - City Offices
 - 2nd & 3rd class cities - \$5 (for charter cities, this can vary)
 - 4th class cities - \$2
 - Township & School District Offices - \$2


Candidate Filing Packet

(suggested)

- Campaign Cyber Security Info (NEW)
- Affidavit of Candidacy
- 2018 Candidate Name Pronunciation Form
- Address of Residence Form
- Affidavit of Withdrawal
- 2018 Campaign Manual
- Campaign Financial Report
- Campaign Financial Report Certification of Filing
- MN DOT Letter – Campaign Signs
- MN Attorney General’s Letter – MN Auto Dialing Law
- Secretary of State Request Forms:
 - Precinct Finder, Map Order, Voter Information, Polling Place List, Accepted Absentee/Mail Ballot List
- IRS Fact Sheet – Political Organizations Tax Filing Requirements

Affidavit of Candidacy...

What to look for?

- Phone Number is REQUIRED 
- Residence address unless Private Data Box is checked
 - Address of Residence Form: This form is to be attached to the Affidavit of Candidacy when a candidate has checked the Private Data Box
 - Also if box is checked, a campaign address is required
 - No PO Boxes
- Legibility
- Required Licenses
- Upper/lower case
 - Middle initial punctuation
 - No occupancy advantage (Dr., Principal, etc)
 - Please make sure candidates complete the affidavit accordingly
 - Issues with McGrath, MacDonald, etc; need to be clear

Affidavit of Candidacy...

- 2018 Candidate Name Pronunciation Forms
 - As the filing officer, it is your responsibility to work with the candidate to complete this form.
- Forward a COPY of all Affidavits any applicable Pronunciation Forms to the County immediately after receiving
 - You will review your originals to the ballot proofs we send you
 - Fax: (651) 267-4878 or
 - Email: erin.n.poncelet@co.goodhue.mn.us

AND

cyndee.marcus@co.goodhue.mn.us

Filing Officer

- The filing officer is the official:
 - Authorized by law to accept affidavits of candidacy
 - Authorized to place a ballot question on the ballot
- Filing Officer must have campaign finance filings -
 - Available for **public inspection**
 - **Posted on jurisdiction's website** within 30 days of receipt
 - Unless city/township has fewer than 400 registered voters
 - Reports must be available on website for 4 years from the date the report was posted to the website
 - Filing officer shall provide the Campaign Finance and Public Disclosure Board with the link to the section of the website where their reports are available
- Filing Officer is **not responsible to verify the content** of the completed campaign finance forms

Candidates & Campaigns

- M.S. 211B covers Minnesota Fair Campaign Practices, also published within Campaign manual
- M.S. 211A covers candidates/committees for local campaign finance
 - Required Campaign Reports:
(tied to the \$750 donations/contributions threshold)
 - Initial Report
 - Year-End Report
 - Election Year Reports
 - Final Report
 - *See Page 55 of the Clerk or Township Election Guide School*

Required Campaign Reports

- A candidate/committee who receives contributions or makes disbursements of more than \$750 in a calendar year shall submit an **Initial Report** to the filing officer within 14 days after the candidate/committee receives or makes disbursements of more than \$750 and shall continue to make the reports listed until a final report is filed. (Campaign Manual page 18):
 - Candidate/committee must file a report by January 31 (**Year End Report**) of each year following the year when the initial report was filed AND

Pre-Election Reports

- 10 Days before Primary/Special (if name/question is on ballot)
- 10 days before General/Special (if name/question is on ballot)
- 30 days after General/Special

Required Campaign Reports

- **Final Report** – candidate/committee may file a final report when all debts have been settled and all assets in excess of \$100 in the aggregate are disposed of. The final report may be filed at any time.
- **Certification of Filing**
 - Due 7 days after the general or special election (11/13/2018)
 - Required for candidates on the ballot
 - Indicates all reports have been filed or did not raise/spend \$750 in the calendar year
 - **An Election Certificate cannot be issued until this is received**
 - If you issue election certificate without receiving certification of filing, guilty of misdemeanor
 - You, as filing officer issue these election certificates

Required Campaign Reports

- Failure to File
 - Filing officer must immediately notify a candidate if they fail to file a report on the date that it is due
 - If missing report is not filed within 10 days after notification is mailed, must file complaint with Office of Administrative Hearing
 - Formal complaint can be withdrawn once the missing report is filed

Election Judge Recruitment & Duties

- Political Party Lists
 - Distributed to all jurisdictions via e-mail May 16, 2018
 - You must select individuals from this list before finding other judges
- Minimum of 4 judges in precinct unless precinct has fewer than 500 registered voters (then 3)
- At least 2 judges in each precinct affiliated with different major political parties (stand-alone town & school elections exempt from this requirement)
- No more than ½ of judges in a precinct from any one major party

Election Judge Guide (Page 2!)

- Basic Qualifications – eligible to vote in Minnesota and be able to read, write and speak English
- Restrictions:
 - Candidates for office cannot be a judge in a precinct where they appear on the ballot (includes active write-in candidates)
 - Applies to relatives of candidate on in precincts where on ballot
 - Someone who live with candidate in precinct where on ballot
 - Related election judges cannot serve together
 - Challengers appointed to contest voter eligibility
- Training & Certification:
 - Must complete a 2 hour election judge course before they serve
 - Certification is valid for 2 years.
 - Head Judges and Health Care Facility Judges are required to complete an additional hour of training.

Election Judge – Other

- Online Election Judge Training (2018)
 - Any new judge is to come to July 19 training 6-8pm
- County is tracking City/Township/School Clerk completed training
 - Those taking on-line will be emailed a certificate with a copy coming to the county as well
 - Those attending in person will receive a certification from us
 - We will be asking for copies of your resolution appointing election judges for all future elections
 - Including Township, School District and special elections
- Secretary of State Toolkit (link included in 5/16/2018 email)
 - <http://www.sos.state.mn.us/elections-voting/get-involved/recruit-election-judges/>

Election Judge – Important Dates

- July 20th – last day to appoint your election judges for the State Primary Election
 - Most jurisdictions appoint their judges to both elections (Primary & General) at this time
 - We will be asking for copies of your resolutions to help track training requirements in our new training database
- October 12th – last day to appoint your election judges for the State General Election
- Election Judge Training:
 - Thursday, July 19th 6-8pm
- Refresher Training (clerk/head judge):
 - September 18, 2018 2-4pm

Electronic Voting Systems: DS200 & AutoMark

- DS200 – Optical Scan Voting System
 - Ballot Counter
- AutoMark – Assistive Voting Device (AVD)
 - Required for all elections except townships with March elections that have fewer than 500 registered voters.
 - Exempt from requirement at their March Township elections:

Belle Creek

Pine Island Twp

Welch

Belvidere

Wacouta

Zumbrota Twp

Goodhue Twp

Wanamingo Twp

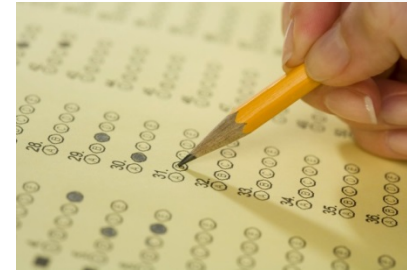
Minneola

Warsaw

Equipment Testing

- Preliminary Testing
- Public Accuracy Testing (PAT)

Electronic Voting Systems: Preliminary Testing



- Diagnostic Testing
 - Before/during preliminary testing, ensure all basic functions are working properly:

AutoMark

- ✓ Printer prints clearly, does not jam
- ✓ Monitor works, touch screen is calibrated
- ✓ Audio clear, volume & temp controls work
- ✓ Battery is charged
- ✓ Locks and doors operate
- ✓ Date/time

Ballot Counters (DS200):

- ✓ Printer prints clearly, does not jam
- ✓ Display on monitor works
- ✓ Battery is charged
- ✓ Locks and doors operate

Testing guide provides detailed list

The 2018 Voting Equipment Testing Guide will be sent out with testing supplies

Electronic Voting Systems: Testing

- DS200 and Automarks
 - Goodhue County has previously performed preliminary, preliminary testing
 - Townships and Cities will be required to bring testing results in
 - Testing materials - we hope to have ready to be picked up by July 16
 - Materials must be brought back here no later than Tuesday, July 31
 - (We have to have everything uploaded to state a week before the election)
- Highly Suggest Head Judges work with you during testing
 - For sure the PAT, if not the preliminary testing

Electronic Voting Systems: Preliminary Testing

- What to look for during equipment testing?
 - DS200
 - Print accurate zeroes tape with candidates in same order as on ballot
 - Should notify if ballot has no votes, overvotes, stray marks in timing channel, cross-party votes (in primary)
 - Should accurately record properly marked votes
 - AutoMark
 - Should allow voters to make choices in a variety of ways
 - Should prevent overvotes and cross-party votes (in primary)
 - Should reject ballots with stray marks in timing channel
 - Should accurately print voter's choices on ballot

Electronic Voting Systems: Preliminary Testing

- How to accomplish?
 - Utilize a Test Deck – set of ballots marked with predetermined valid votes to test each position, for each office/question, for each ballot style with all equipment to be tested.
 - Basic test deck is ordered from our ballot vendor
 - Some of those ballots must be replaced and marked by hand and by the AutoMark
 - We will have removed those ballots that need to be marked by the AutoMark from the test deck that you receive from us
 - We will email you when we have the testing materials ready
 - Predetermined Results Chart

Electronic Voting Systems: Preliminary Testing

Summary of Process

- See Equipment Testing Guide for materials to have on hand
- Mark AutoMark ballots
- Put the Election Day Backup thumb drive in the DS200
 - Print zero tape and compare to ballot (order should be the same)
- Insert ballots into counter
 - Vary orientation
 - Override alerts for overvotes, cross-party, and blank ballots
 - Ballot marked in timing marks is rejected (cannot be overridden)
 - Note timing marks are now on all sides of the ballot
- Run results tape, compare with spreadsheet
- Troubleshoot any errors found
 - *(This will be the thumb drive brought to the County)*
- Repeat using Election Day thumb drive
 - *(Zero out Election Day thumb drive when finished. It stays in the machine for public testing)!*

Electronic Voting Systems: Preliminary Testing

- Tips

- Test back-up thumb drive first
- Try different orientations when inserting ballots

- Troubleshooting

If the test results don't match during preliminary testing:

- Put ballots in order & make sure you have them all
- Identify race with error (doesn't match spreadsheet)
- Compare race on spreadsheet and each ballot to determine which ballot was marked incorrectly
- If necessary, mark a new ballot.
- **Re-test – it is imperative that you have an errorless test**

Electronic Voting Systems: Preliminary Testing

- Completion of Testing
 - Mark on each results tape whether it was main or backup memory thumb drive
 - Place test deck, results chart, tapes in sealed container in secure area
 - Lock Election Day thumb drive in ballot counter
 - Store equipment in secured area
 - Complete Preliminary Testing Certificate
 - Bring the Election Day Backup Thumb Drive with tape to the County.
 - Deliver results to County so they can transmit test results to Election Reporting System (ERS) and Election Night Results (ENR)
 - Enter Votes and Statistics
 - Proof Abstracts
 - Check ENR Website

Electronic Voting Systems: Public Accuracy Test (PAT)

- Demonstrates accuracy of voting system for public
- Must be held within 14 days of election
- Notify public of time and place at least 2 days in advance
 - Publish in official newspaper
 - Post in office of local election official conducting test
- At least two election judges from different parties must witness test
- Public may view test, but not handle materials
 - During PAT, you must mark and replace some of the AutoMark ballots previously used in your test deck (we recommend 3).

Electronic Voting Systems: Public Accuracy Test (PAT)

- County Dates for Public Accuracy Test:
 - Primary: August 7, 2018 at 10am
 - General: October 30, 2018 at 10am

Electronic Voting Systems: Public Accuracy Test (PAT)

Summary of Process

1. Open sealed container from preliminary testing
2. Use same test deck and results chart
 - Mark and replace some ballots with AutoMark at PAT (we recommend 3)
3. Use Election Day thumb drive already locked in equipment
4. Print zero tape on ballot counter
5. Insert ballots into ballot counter
6. Run results tape on ballot counter
7. Compare tape w/ results chart
8. Must have errorless test
9. Zero out Election Day thumb drive
10. Lock thumb drive in DS200
11. Complete Certificate of Public Accuracy Test
 - Including witness signatures
12. Place and store test decks, results chart, tapes in sealed container in secured area (22 months)
13. Store Equipment in Secure area

Electronic Voting Systems

- SECURITY – SECURITY - SECURITY
 - Control and Activity manage access
 - Always keep your equipment and election materials in a secured area when not being tested
 - Do not allow 3rd parties unattended access to election equipment.
 - Have schedule similar to Incident Report to log activity with machine access
 - Retain all testing materials for 22 months



Electronic Voting Systems

- SECURITY – SECURITY – SECURITY
 - Multi facited authentication for SVRS discussed earlier
 - EQC Thumb drive
 - Transmission all done on separate computers with separate lines
 - New Cyber activity instructions for our IT department



Election Day



- Polling Locations:
 - Verify your doors open at 7am
 - Make sure you have good signage and that walkways/doorways are wheelchair accessible
- DS200 Setup
 - No need to worry about flap on the M100 the ballot box. 😊
 - With preliminary and PAT testing should feel comfortable with equipment
 - Roll the zero tape into the machine then put the cover back on and lock it. Voters will not see the tape. At the end of the night, remove the cover and pull out the zero tape. Then, print the results tape.
 - If you leave the zeroes tape tucked under the cover when you try to print results, it will not print.

Election Day – tips?

- Continue to read/review Clerk Guide throughout process
- Day or two before election, re-read through Election Judge Guide
- Review new emergency procedures
- Think about which of your judges are suited to which roles... emphasis on Head Judge/Registration Judge
- Set up room/building early
- What else might you need?
- Primary will be a different experience than General



Election Day

- Election judge vacancies on Election Day
 - Clerk may fill vacancies if appointed alternates
 - If appointed at the precinct, Head Judge provides emergency training
- No lingering within 100 ft of building (except exit pollers)
- Document on incident log if refuse to remove campaign materials, but allow voter to vote
- Cover up challenge in roster until voter comes to sign register
- Challengers must prove residence in MN (same as id to vote)?
 - Picture not necessary

Election Day – Primary

Races only on ballot if a Primary is necessary

Republican and Democratic-Farmer-Labor party columns

- Federal Partisan Primary Ballot
 - US Senator (Special Election expiring 2021)
 - 4 Republican candidates & 5 Democratic-Farmer-Labor candidate
 - US Senator (Term expiring 2025)
 - 3 Republican candidates & 5 Democratic-Farmer-Labor candidate
- State Partisan Primary Ballot
 - Governor/Lt Governor
 - 3 Republican candidates & 5 Democratic-Farmer-Labor candidate
 - Attorney General
 - 3 Republican candidates & 5 Democratic-Farmer-Labor candidate



Election Day - Primary

- State & County Nonpartisan Primary Ballot (Nonpartisan side)
 - Local Primaries:
 - RW City Council – At Large
 - RW City Council – Combined Ward 1&2, Ward 4
 - Lake City Council
 - County Sheriff
 - 3 candidates



Election Day – General

(Federal, State, County, Judicial)

- State Offices
 - Governor
 - Secretary of State
 - State Auditor
 - Attorney General
- Legislative Offices (where applicable)
 - State Representative – 21A, 21B or 58B
- Judicial Offices
 - Supreme Court Associate Justice – Seat 1,2,5
 - Court of Appeals – Seats 2,4,6,7,12,
 - First District Court – Seats 2,6,10,14,20,24,26,29, 30,31
- County Offices
 - County Commissioner – Districts 2,4 (where applicable)
 - Attorney
 - Sheriff
 - Soil & Water Supervisor – Districts 1,2

Election Day – General

- Local Offices
- Local Questions
 - Notice of Election for questions due August 24th
 - If you know you are having a question, please work with us as early as possible. We cannot sign off on ballot proofs and have our vendor start printing ballots until all county races/questions are complete.
 - Candidate filing closes August 14th with candidate withdrawals August 16th
- Ballots Proofs
 - If you have an office or question on the ballot, we will be sending you a copy of your ballot proof to review.
 - We need your approval ASAP; waiting for one means waiting for all.

2014 Incident Logs

- If you are not 18 on the day of the Primary, you cannot vote at the Primary.
 - Age 17 at Primary but age 18 at General – first time voter at 2016 General.
- Voters must sign the roster before receiving a ballot.
- Emphasize voter instructions:
 - Ex. How many candidates you can vote for in school races
 - PRIMARY: not to cross party lines (should be fairly easy this year)
- Election Day Voter Registration:
 - In the 2014 General Election, we had **14 voters** (in 8 different precincts) who **registered and voted** in the wrong polling place. Verify address in precinct finder.

2016 Incident Logs

- Election Judge does not show. Called said she wasn't coming
- Wrong address – re-register – unhappy
- Curbside voting – didn't have her sign in roster – did a blank page
- 17 yr old registered but did not vote. Will be 18 in November
- Fair share of spoiled ballots due to cross voting
- Cheater glasses
- Included receipt, signature and machine counts periodically throughout day in the incident log
- Automatic door locks – reprogram for hours on Election Day
- On Election Day at 3:30 spouse requested a ballot for HCF

2016 Incident Logs

- Had SS card and a person to vouch. Did not have a photo ID (necessary?)
- Voter called city and they could not tell her where to vote. Make sure someone has computer screen up to SOS link as to where and be helpful
- RW 4-2 Handicapped door locked
- A number had people register, then found them in the roster after all
- M100 not working – 3 hours later found pen down inside machine
- AB handwritten on wrong signature line of roster
- Busy polls and missed new registrants signing new roster page
- Challenge – voted out of precinct. Voter thought could have been prior election. Did have license with current local address

2016 Incident Logs

- Putting ballots in Automark rather than M100
- Wanted to use closing documents form recent home purchase
- Automark needed to be relocated because in way of voters
- Have list of questions available for challenged voters
- Voter upset because didn't have correct ID to register. Thought later about dad vouching but daughter upset
- “Voter receipt packet less than 100”
 - we reuse so they may have less than 100.
- AB Ballots not accepted at polls – all offices need to know this
- Signed roster even though had a name change; then re-registered with new name and signed there too
- Red Wing – request to consider included list of all polling places in front of book
 - Polling place list is included in the precinct finder

Post-Election Duties

After 8pm Election Night

NO CHANGE

- Returning to the County after closing the polls
 - One or more judges deliver ballots & materials
 - Request clerk to remain/be available until all returns for their jurisdiction have been received
- County Check-In Process (2nd Floor of Gov't Center)
 - We will follow same process as in 2016
 1. Check In – Staff will “check you in” and complete a Record of Materials Received
 2. Summary Statement Review – County staff will review and verify the information found on your Summary Statement
 3. County staff will transmit DS200 results to the State’s Election Reporting System
 4. Refreshments & conversation with fellow clerks and judges.

Post-Election Duties

Canvassing Board

- Who makes up Canvassing Board?
 - Municipal Results = City Council or Township Board
 - School District Results = School Board
- What does the Canvassing Board do?
 - Election returns must be reported to a canvassing board
 - Main duty is to certify election results
 - Results can be presented/compiled in an “abstract” – County provides each jurisdiction with an abstract for their canvassing board
 - Process:
 - Take oath of office
 - Publically canvass results (i.e. review/discuss)
 - Sign reports/abstracts & retain abstracts permanently

Post-Election Duties

Canvassing Board Dates

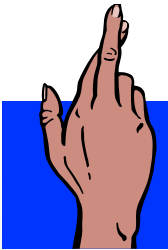
- Primary Election
 - State statute: the county & any local jurisdictions with local races on the ballot must canvass on the 2nd or 3rd day after the Primary Election – **August 16 or 17.**
 - The County Canvassing Board is set for 8:30 am., Friday the 17th.
 - At the County Canvass of the State Primary, the County will set the Post Election Equipment Review (PER) location, date and time.
- General Election
 - State statute: canvassing boards may canvass between the 3rd and 10th day following the General Election. (Nov 9-16)
 - The County Canvassing Board is set for November 13th at 8:30 am.
 - At the County Canvass of the State General, the County will randomly select the precincts for the Post Election Equipment Review (2)
- Schools (re: questions)
 - A written notice containing the certified vote totals for each ballot question must be provided to Commissioner of Education

Post-Election Duties

- Clerk sends out Notice of Nomination for “winning” Primary candidates following Primary Election
- Clerk sends Certificate of Election for “winning” General candidate following General Election
 - ONLY after you have received all required campaign financial reports

Post-Election Duties

- Post-Election Equipment Review (PER)
 - Manual recount of votes for offices of President (or Governor depending on year), U.S. Senator & U.S. Representative
 - Time, date and location will have been set at the County's Primary Election Canvassing Board (August 17th)
 - Precincts to recount will have been selected at random at the County's General Election Canvassing Board (November 13th)
- Recounts – hoping for no recounts but...
 - County, Municipal, School Offices:
 - Recounts required when difference is $< .5\%$ (up to local election official to determine)
 - Recounts are discretionary (candidate request) when the difference is $.5\%$ or $>$
 - If you need more information on a local recount, contact our office



Other: Training Dates



- Head Judge/Health Care Facility (HCF) Judge Training
 - 1 hour in length
 - Will be offered following this training today. Moved date up from prior years due to implementation of DS200 equipment
- Election Judge Training
 - Thursday July 19 (6 – 8 pm)
 - New Judges. Clerks and Election Administrators can certainly attend along with their new judges
- Refresher Course
 - September 18 (2 – 4 pm)
 - Clerks and their Head Judges should plan to attend
 - Recap of Primary Election as well as reminders/changes for General Election

Other: General Reminders

- Please remember to check your e-mail every day...
 - All election correspondence comes via e-mail
 - Election distribution list – you can add as many e-mail addresses as you like to the list



Other: Record Retention

- Most election materials must be retained for 22 months
- Election abstracts must be retained permanently
- Secure these materials
- Consult your local legal advisor for more information on retention practices

The End 😊

Thank you for coming today!

Break Out Sessions

- Absentee Voting/Health Care Facilities (HCF) for Designated Cities
(stay here)
- Townships with March Elections (Read slides 72-82)
 - If you want to learn more about AB, stay here for next session before moving to try equipment
- New Equipment Review
(2nd Floor - Room 301-1)



Township Elections - AutoMark

- Townships required to use an AutoMark in their 2019 township election (500 registered voters):

Cannon Falls Twp	Leon Twp
Featherstone Twp	Roscoe Twp
Florence Twp	Stanton Twp
Hay Creek Twp	Vasa Twp

* Same list as in 2017/2018

Township Elections

- Notice of Filing vs. Notice of Election
- Notice of Election to County Auditor – due in December (not January)
- Absentee Voting for Township Elections
 - Absentee Supplies – we are trying to make things easier by bringing to Zumbrota for the annual meeting.
 - Absentee Supplies are not the same as Election Day Supplies
 - Pick up and return supplies, ballots, rosters in timely manner
 - Must be open the Saturday before the election 10am – noon for absentee voting... EVEN IF, no one ever comes to vote.
- Receiving returns
 - The clerk receives and retains the returns (ballots/materials) when election judges have completed their work on election night (22 month retention, abstracts/results are permanent)

Township Elections

Moving the Town Election to November

Process:

1. Process initiated by Board or voters
2. Question placed on a ballot submitted to the town voters and the next annual town election
3. If resolution/ordinance is affirmed by majority of voters, the town officers are elected for terms of 4 years (clerk/treasurer are elected in alternate years)
 - Transition to the 4-year terms must be accomplished as set out in resolution/ordinance.
4. If passed, clerk must adjust the town's election schedule to accommodate a November town general election.

Mail Balloting

- Recap of law:
 - Allowed for non-metro towns of any size (all Goodhue County townships)
 - Cities with < 400 registered voters (Bellechester & Dennison)
 - Any precinct < 100 registered voters

PROS	CONS
Auditor's Office as polling place on election day (need only 1 set of equipment for all MB's)	Mailing costs
Greater # of ballots cast	New residents may be unfamiliar with process
Fewer election judges (training/costs)	Returned as undeliverable; replacements

Mail Balloting

- Process:

- Must be authorized by resolution (includes which elections)
 - Mail ballot for all elections
 - Mail ballot for state/federal elections but still in-person at town hall for township elections
 - Mail ballot for township elections but still in-person at town hall for state/federal elections
- Timing: adopted no later than 90 days before first election to be conducted by mail.
- Effective until revoked; can be revoked no later than 90 days before next election.

- Statistics:

- 69 counties (out of 81) have mail ballot precincts
- For 17 counties, at least 50% of their precincts vote by mail ballot

Absentee Voting

Absentee Voting Guide

- 2 Separate Absentee Voting Processes:
 - MN Process – regular process (203B.04 & 203B.15)
 - County administers for state/federal elections
 - Township administers for March Township Elections
 - Procedures for military and overseas voters (UOCAVA)
 - County always performs this process for UOCAVA voters – includes UOCAVA Ballot Board
- Absentee Ballot Board

Absentee Voting

Absentee Voting Guide

- Absentee voting takes place in the office of the municipal clerk for March Township Elections. In many if not all cases, this may be the clerk's home.
 - This information should be readily shared with the public, including hours available for absentee voting.
- For Township Elections, the absentee voting period starts 30 days before the election.
- Township must establish an Absentee Ballot Board to accept/reject absentee ballots
 - County is the Absentee Ballot Board for UOCAVA ballots and any ballots in a state/federal election
 - Ballot board must be election judges trained in the handling of absentee ballots – township board members who are trained as election judges can serve on this board (if not on ballot).

Absentee Voting

Absentee Voting Guide

- Forms:
 - Absentee Ballot Applications
 - Instructions – registered, non-registered
 - Voter Registration Applications
 - Envelopes (signature, secrecy, return)
 - Master List – list of all registered voters in jurisdiction
 - Precinct Finder – list of addresses by precinct
 - Agent Return Log – to log individuals other than voter who return ballots
 - Incident Log – to make note of any occurrences in the AB voting location

Absentee Voting

Absentee Voting Guide

- Process:

1. Have voter complete an absentee ballot request
2. Determine if voter is registered or not – look up in master list.
3. If not registered, have voter complete voter registration application
 - Verify id and proof of residence; also verify that residence is found within your precinct (precinct finder)
4. Give voter ballot and applicable envelopes
 - Tan/Gold Security envelope (for ballot); this envelope is placed inside the white signature envelope
 - White Signature envelope (registered or non-registered)
 - Return envelope (with postage) and instructions if voter is taking ballot and materials with them
5. When voter returns their white signature envelope (with ballot inside), clerk can complete the “witness” section

Absentee Voting

Absentee Voting Guide

- Process: (continued)
 6. Absentee Ballot Board will need to accept/reject ballot within applicable time period (*calendar days, not business days*)
 - Accept/reject within 5 days of receipt up until 2 weeks before election
 - During the 14 days preceding the election, must accept or reject within 3 days of receipt
 7. Envelope processing can begin a week before the election
 8. Election Night tally the absentee ballot totals
 - They can be reported separately from the polling place totals or combined with the polling place totals; if there are very few absentee ballots, combined totals should be used when communicating results
- ❖ *If you receive an application through the mail or voter wants their ballot mailed, follow same instructions except now you'll have a mail out envelope (plus postage on return envelope); send registered or non-registered materials depending on voter registration status*

Shared vs. Combined Polling

- Shared Polling Place

- Use (1) Precinct voting system for up to 4 precincts
 - Must be in same county
 - Combined total of fewer than 2,500 voters as of June 1
- Share equipment but have separate:
 - Election Judges, Rosters, Summary Statements
- Currently: Goodhue City/Goodhue Township,
- Formerly: Belvidere Township/ Bellechester City (went to mail balloting), Dennison City/Warsaw Township

- Combined Polling Place (must be done by May 1)

- Share equipment but have separate:
 - Rosters, Summary Statements
- *May appoint a single set of election judges for site*
 - *But, one judge must be appointed from each municipality*
- Kenyon/Holden/Cherry Grove Townships



2016 New Laws – SF 2385

- 2020 Presidential Election
- By March 1 of odd year prior to presidential primary, party chairs must submit agreed upon presidential primary date to OSS.
 - Date must not be on the March town election date.
- Separate ballots for each major political party
- Voter must request a party ballot and the choice must be recorded on the polling place roster
 - This “choice” will now become public information
- State will reimburse many of the local county and municipality costs for this election and a state revenue fund will be created
 - Reimbursement requests to state to cover: ballot printing, absentee ballot postage, sample ballot publication, polling place preparation, electronic voting system preparation, compensation for temp staff/overtime, election judge salaries, county canvassing board member compensation

2017 New Laws – SF 2381

(Article 3 – Elections Emergency Plans)

- In the event of an emergency, combined polling places may be established for an election after May.
- Polling place may be changed in an emergency to a place that is as near as possible. May be located outside of precinct.
- Secretary of State must develop a state elections emergency plan and a guide to assist county and local officials in developing a county elections emergency plan.
- County must develop a county elections emergency plan.
 - **Cities**, towns and schools may create an elections emergency plan
 - Plans must be reviewed prior to each state general election with any revisions due to state by July 1st
 - Initial county plans are due Sept. 1, 2016
- Local election official may extend polling place hours for one hour if the polling place has been combined or moved on election day.