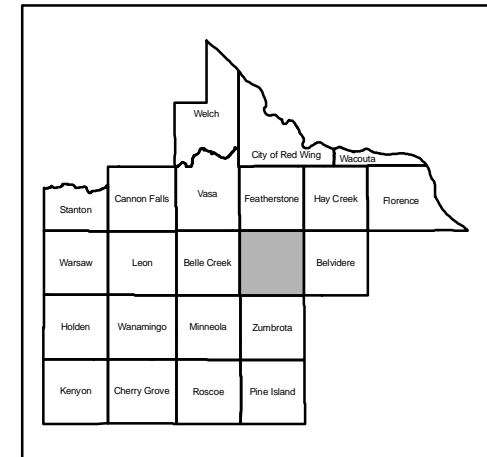


Goodhue County Zoning Districts

Goodhue Township



ABOUT THIS MAP:
This map is derived from a combination of data sets. The information on this map is only as accurate as the original source material.

FLOODPLAIN:
100 and 500-year flood inundation areas are provided via Q3 Flood Data produced for Flood Insurance Rate Maps by FEMA (Federal Emergency Management Agency).

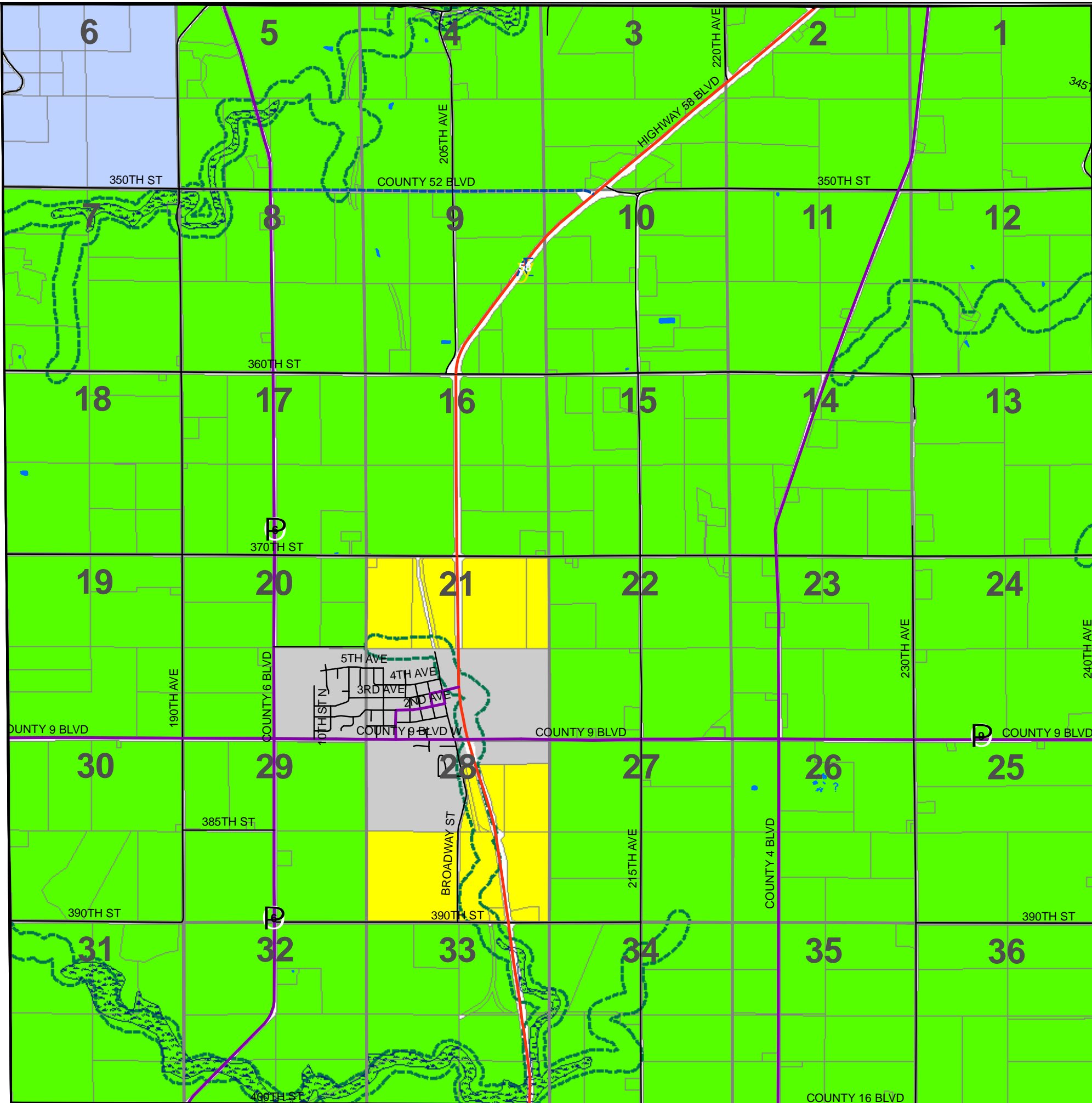
WILD & SCENIC:
River layer encompassing wild and scenic river management districts created by the DNR and based on State PLS section boundary lines. Due to the fit of this shapefile to section lines, it is NOT considered to be legally accurate.

SHORELINE:
The shoreline coverage was developed by creating a 300ft buffer of protected streams and a 1000ft buffer from lakes. The protected streams coverage was developed in-house using 1980 DNR 24K stream data along with a 1996 map of Protected Waters and Wetlands provided by the DNR Division of Waters.

ZONING:
Zoning information was provided by the Goodhue County Land Use Management Office and was best fit to the existing digital parcel coverage.

DATA DISCLAIMER:
Goodhue County assumes NO liability for the accuracy or completeness of this map OR responsibility for any associated direct, indirect, or consequential damages that may result from its use or misuse.

Goodhue County Copyright 2006
Map Created 9/25/2006



Legend

- Lakes
- Section Lines
- Wild & Scenic
- Shoreland
- 100-year Flood
- 500-year Flood

Zoning Districts

Description

- A1 - Agricultural Protection
- A2 - Agricultural
- A3 - Urban Fringe
- B1 - General Business
- B2 - Highway Business
- CR - Commercial Recreation
- I - Industry
- R1 - Suburban Residential
- Within City Limits or No Data
- Township Boundaries