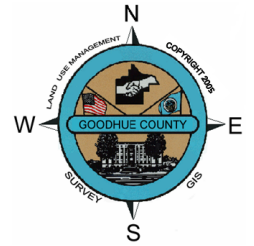
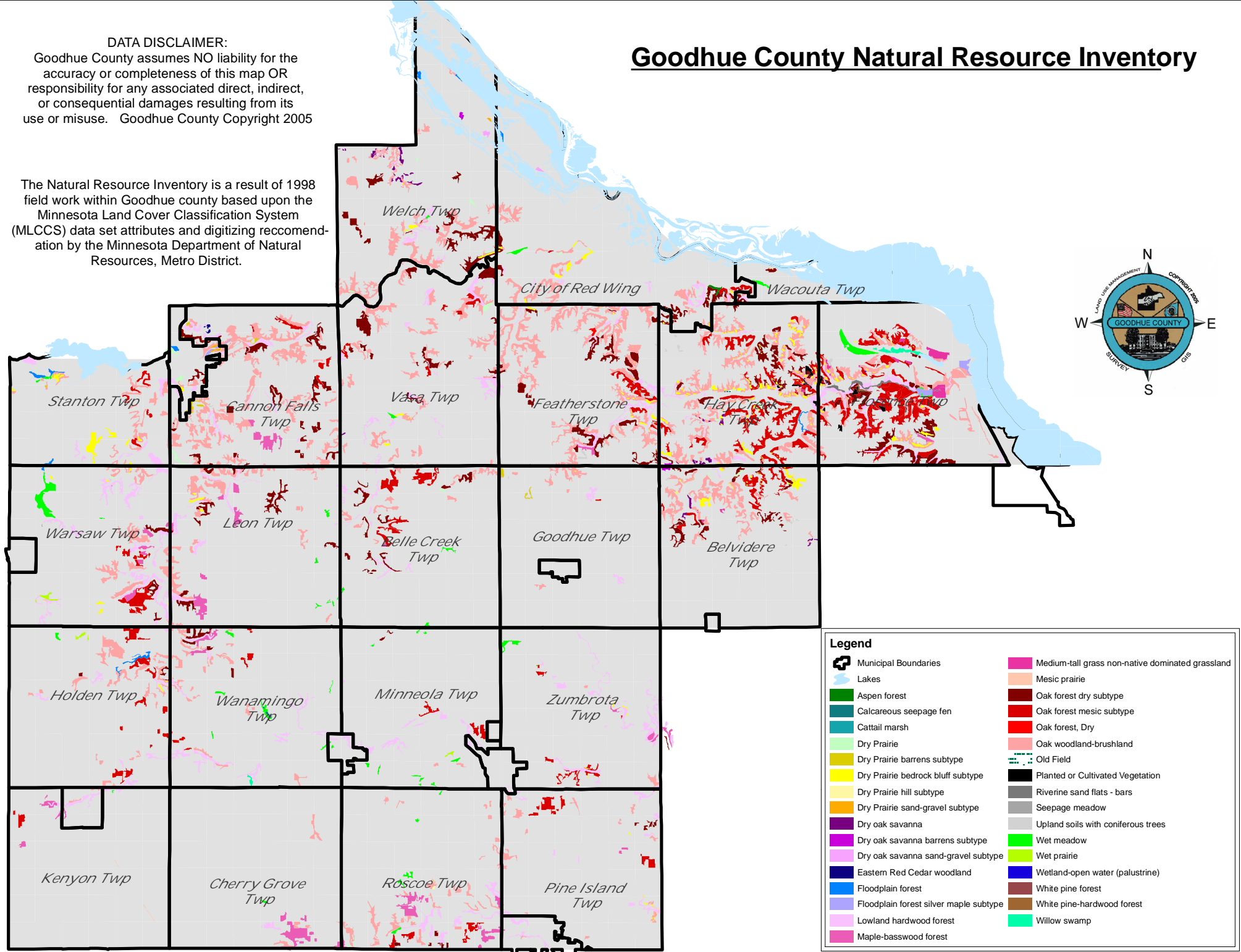


DATA DISCLAIMER:
 Goodhue County assumes NO liability for the accuracy or completeness of this map OR responsibility for any associated direct, indirect, or consequential damages resulting from its use or misuse. Goodhue County Copyright 2005

Goodhue County Natural Resource Inventory

The Natural Resource Inventory is a result of 1998 field work within Goodhue county based upon the Minnesota Land Cover Classification System (MLCCS) data set attributes and digitizing recommendation by the Minnesota Department of Natural Resources, Metro District.



Legend	
	Municipal Boundaries
	Lakes
	Aspen forest
	Calcareous seepage fen
	Cattail marsh
	Dry Prairie
	Dry Prairie barrens subtype
	Dry Prairie bedrock bluff subtype
	Dry Prairie hill subtype
	Dry Prairie sand-gravel subtype
	Dry oak savanna
	Dry oak savanna barrens subtype
	Dry oak savanna sand-gravel subtype
	Eastern Red Cedar woodland
	Floodplain forest
	Floodplain forest silver maple subtype
	Lowland hardwood forest
	Maple-basswood forest
	Medium-tall grass non-native dominated grassland
	Mesic prairie
	Oak forest dry subtype
	Oak forest mesic subtype
	Oak forest, Dry
	Oak woodland-brushland
	Old Field
	Planted or Cultivated Vegetation
	Riverine sand flats - bars
	Seepage meadow
	Upland soils with coniferous trees
	Wet meadow
	Wet prairie
	Wetland-open water (palustrine)
	White pine forest
	White pine-hardwood forest
	Willow swamp